



SIAMP

Monaco

SANITARYWARE SOLUTIONS

Sanitary expertise & water friendly

A SPECIALIST AT YOUR SERVICE

All our products are designed and developed in order to meet the most demanding international standards along with voluntary certification schemes. Our approach to quality starts at the design stage and is followed through the manufacturing and distribution process.
All SIAMP products are subjected to rigorous and intense tests, using our own, and third party test laboratories; **our supporting frames are subjected to loads of 400 kg or 150 kg and our flushing systems to 200 000 cycles repetitive performance and endurance tests.**



SIAMP is the origin of many innovations in the world of toilets and puts all its resources into designing and manufacturing innovative and eco-efficient solutions that guarantee hygiene, comfort and responsible management of water.



QUALITY & DURABILITY



Designed and developed in Europe, our products are continually tested and certified to the highest standing, meaning we can back our products with a 10-year warranty.

CUSTOMER CARE SERVICES



- Easy access and answer in 24h max
- Dedicated well trained technicians in all SIAMP area
- Easy spare parts availability

Customer care number : +91-2688-274313/4/5/6
For toll free number : 1800 121 9077
Whatsapp GSM : +91 9998334747
E-mail : contact.india@siamp.com
Web : www.siamp.com



Founded in 1947, SIAMP designs and manufactures innovative sanitary products for the bathroom environment : wall hung solutions, flush plates, flushing technology, cisterns and seat covers. Whether it's a commercial project or the renovation of a domestic bathroom, SIAMP has the solution.

Pioneer of the plastic seat cover and now a global leader of flushing technology, SIAMP is the brand chosen by leading ceramic manufacturers to provide the flushing solution throughout the world.

Besides the head office based in Monaco, SIAMP is

present across 5 continents through a network of 8 sales subsidiaries, 6 production sites and hundreds of distributors, for the benefit of millions of users.

To remain a sanitary specialist in this evolving market, we invest in new technologies to develop new products and perfect the efficiency of manufacturing.

Understanding the importance of water sustainability, SIAMP continues to develop technical solutions to protect this resource for future generations.

SIAMP is regularly at the origin of innovation recognised by a large number of international patents.

WORLDWIDE PRESENCE



INTRASLIM

THE ALL-TERRAIN CONCEALED CISTERN

SIAMP presents INTRASLIM, the optimized and universal solution for the toilets. Concealing the cistern brings modernity and lightens your WC room.


FLUSHING TECHNOLOGY

- Mechanical actuation: the most popular actuation solution on the market ensuring simplicity and efficiency.
- Flushing volumes are factory preset at 6 and 3l and can be adjusted to 2.4 and 4.8l.

VERSATILE

INTRASLIM concealed cisterns can be coupled with back to wall or wall hung bowls. Robusts, our structures resist to a 400 kg load. Cisterns can be fixed bricklaying or attached to a supporting wall with a light cladding as plasterboards.

CONFIDENCE

100% of SIAMP's expertise is at the heart of Intraslim. As a world flushing technology reference, SIAMP provides a high performance concealed cistern in terms of flush efficiency and reliability. INTRASLIM complies with 

EN 14055
Type 1 and 2

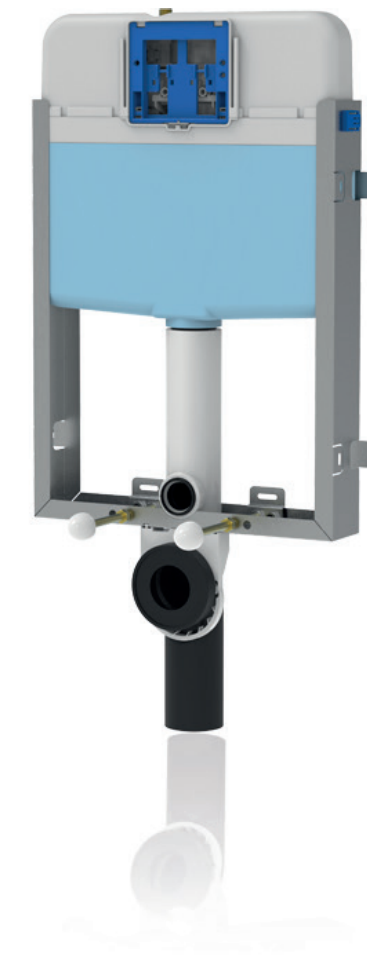
INTRASLIM FULL FRAME

Wall Hung / Light Wall



INTRASLIM HALF FRAME

Wall Hung / Wet Wall



INTRASLIM

Back To Wall / Wet Wall



Flush plates

Choose the material, the colour, the surface and the design to match your bathroom's decoration.



SMARTY



SEGMENT



SWING



INSTALLATION VERSATILITY & FLUSHING PERFORMANCE



- 1 cistern
- 3 installation possibilities
- 3 flush plates designs

- 5 fixation kinds
- 6 flush plates options
- 90 mm thick

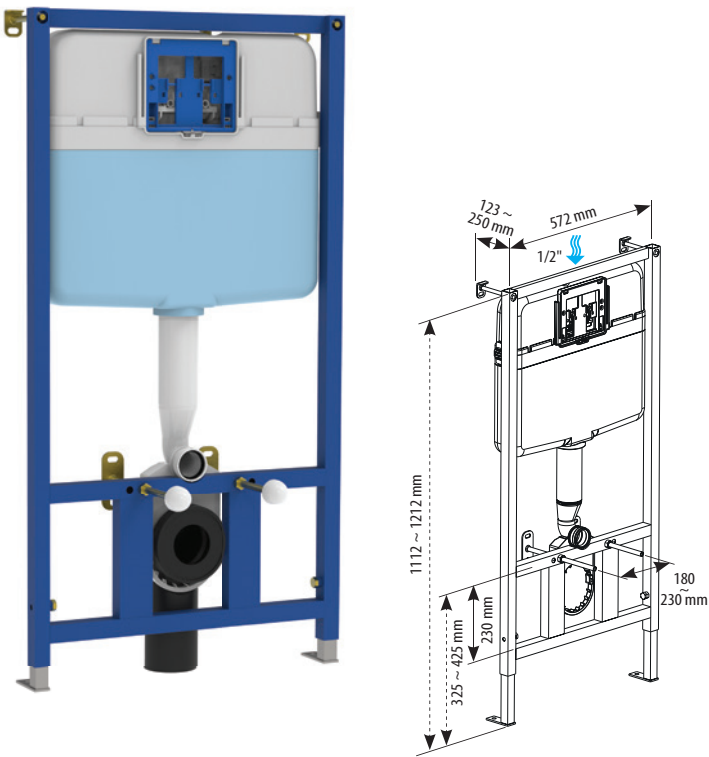
RIVIERA

THE ROBUST AND SUSTAINABLE EXPOSED CISTERN

INTRASLIM FULL FRAME

Slim for narrow depth installation

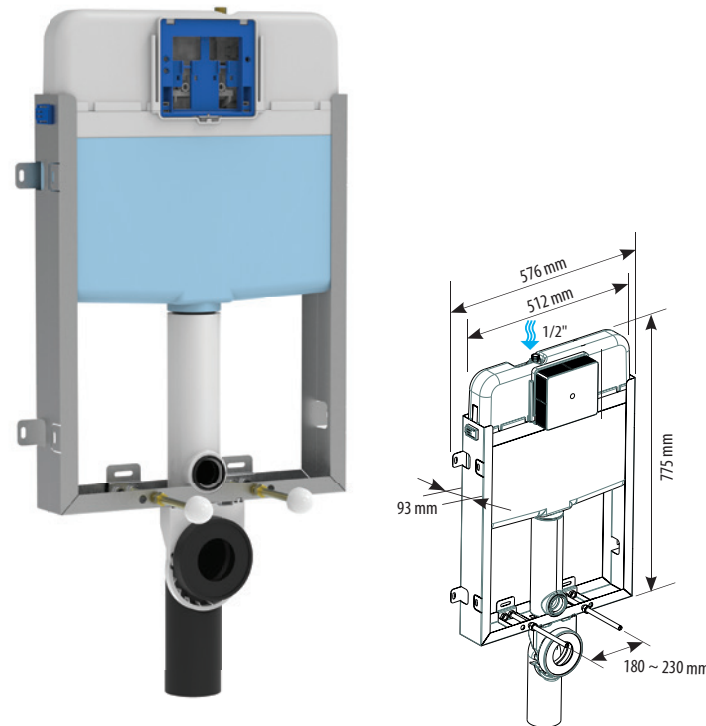
- Concealed light wall installation
- Structure load bearing to 400kg
- Insulated to prevent condensation
- Double flush front commands
- Adjustable mechanical outlet valve
- Compact 95L inlet valve
- Brass stop valve



INTRASLIM HALF FRAME

Slim : 90 mm

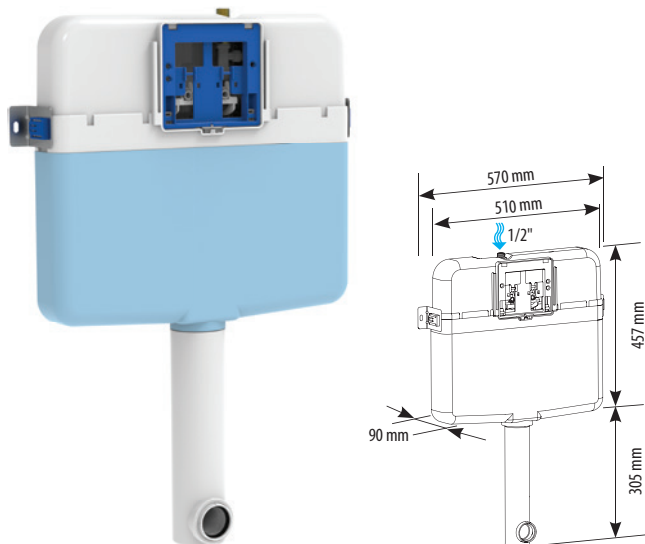
- Wall fixing structure load bearing to 400kg
- Optional feet
- Concealed wet wall installation
- Insulated to prevent condensation
- Double flush front commands
- Adjustable mechanical outlet valve
- Compact 95L inlet valve
- Brass stop valve



INTRASLIM

Slim : 90 mm

- Concealed wet wall installation
- Insulated to prevent condensation
- Double flush front plates
- Adjustable mechanical outlet valve
- Adjustable compact 95L quiet fill valve
- Stop valve
- 1/2" M outer water connexion



DESIGN

An ergonomic cistern designed in Europe and an activating button entirely in bright chrome.

QUALITY & PERFORMANCE

Our fittings are rigorously tested by our European R&D and quality departments to work for **200 000 operations** in normal use conditions, meaning that we can offer a 10-year warranty.

QUICK FITTING

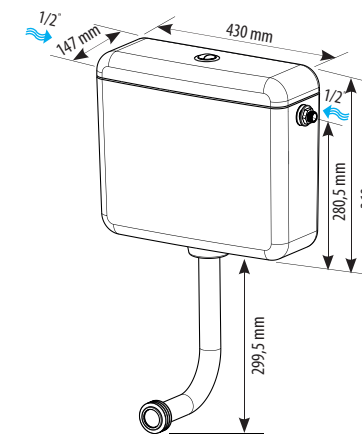
An easy, quick and accurate installation with 2 side inlet connections (left or right).

RIVIERA

Available in dual flush 3-6L or single flush 6L



- For floor standing WCs
- Low level installation
- Maximum water volume capacity 9l
- Quiet fill inlet valve
- HDPE bend pipe Ø40/40 mm included



MONACO

THE SOLID AND DESIGN SEAT COVER

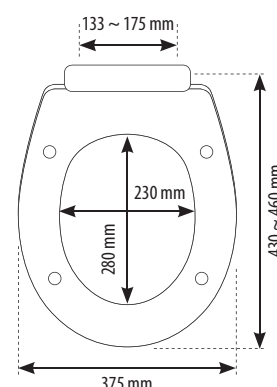
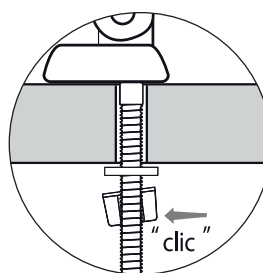


MONACO

Quick fixing system



- Oval shape
- Antistatic polypropylene
- Adjustable bar hinge
- Easy cleaning (no seat or cover buffers)



PACKING INFORMATION

Model	Packing	Packing		Pallet			MOQ
		N# of sales units	Width x depth x height (mm)	Width x depth (mm)	N# of masterboxes	N# of sales units	
Concealed cistern							
INTRASLIM	Box	1	725 x 105 x 570	800 x 1200	36	36	1
INTRASLIM Full Frame	Box	1	1130 x 640 x 150	1000 x 1200	12	12	1
INTRASLIM half frame	Box	1	870 x 545 x 150	1000 x 1200	12	12	1
Exposed cistern							
RIVIERA	Box	3	475 x 415 x 505	1000 x 1200	16	48	3
Seat cover							
MONACO	Box	6	500 x 400 x 400	1000 x 1200	16	180	6